

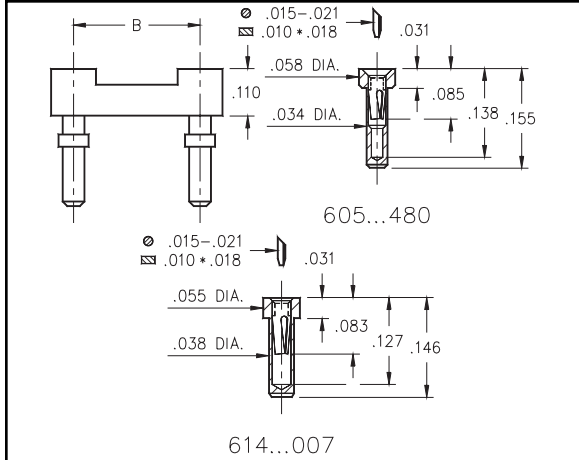


# DUAL-IN-LINE SOCKETS

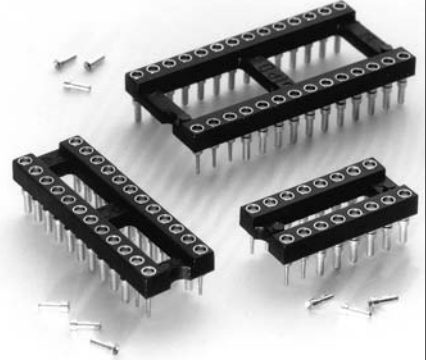
## Carrier Type

### Low Profile

Series 605, 614



- Low profile receptacles sit only .031" high above the board.
- Removable plastic carriers can be returned for reloading.
- Hi-Rel, 3-finger BeCu #11 contact is rated at 3 amps. See page 206 for details.
- Series 605 and 614 use MM #0548 & #1407 pins. See page 126 for details.
- Insulators are high temperature thermoplastic.



Total number of pins	Pin Spacing			Quantity per tube	Ordering Information	
					Length = .146 (.039 Min. Mounting Hole)	Length = .155 (.035 Min. Mounting Hole)
	A	B	C			
10	0.5	0.2	0.3	40	614-XX-210-31-007000	605-XX-210-11-480000
4	0.2	0.3	0.4	102	614-XX-304-31-007000	605-XX-304-11-480000
6	0.3	0.3	0.4	68	614-XX-306-31-007000	605-XX-306-11-480000
8	0.4	0.3	0.4	50	614-XX-308-31-007000	605-XX-308-11-480000
10	0.5	0.3	0.4	40	614-XX-310-31-007000	605-XX-310-11-480000
14	0.7	0.3	0.4	28	614-XX-314-31-007000	605-XX-314-11-480000
16	0.8	0.3	0.4	25	614-XX-316-31-007000	605-XX-316-11-480000
18	0.9	0.3	0.4	22	614-XX-318-31-007000	605-XX-318-11-480000
20	1.0	0.3	0.4	20	614-XX-320-31-007000	605-XX-320-11-480000
22	1.1	0.3	0.4	18	614-XX-322-31-007000	605-XX-322-11-480000
24	1.2	0.3	0.4	16	614-XX-324-31-007000	605-XX-324-11-480000
28	1.4	0.3	0.4	14	614-XX-328-31-007000	605-XX-328-11-480000
20	1.0	0.4	0.5	20	614-XX-420-31-007000	605-XX-420-11-480000
22	1.1	0.4	0.5	18	614-XX-422-31-007000	605-XX-422-11-480000
24	1.2	0.4	0.5	16	614-XX-424-31-007000	605-XX-424-11-480000
28	1.4	0.4	0.5	14	614-XX-428-31-007000	605-XX-428-11-480000
32	1.6	0.4	0.5	12	614-XX-432-31-007000	605-XX-432-11-480000
24	1.2	0.6	0.7	16	614-XX-624-31-007000	605-XX-624-11-480000
28	1.4	0.6	0.7	14	614-XX-628-31-007000	605-XX-628-11-480000
32	1.6	0.6	0.7	12	614-XX-632-31-007000	605-XX-632-11-480000
36	1.8	0.6	0.7	11	614-XX-636-31-007000	605-XX-636-11-480000
40	2.0	0.6	0.7	10	614-XX-640-31-007000	605-XX-640-11-480000
42	2.1	0.6	0.7	9	614-XX-642-31-007000	605-XX-642-11-480000
48	2.4	0.6	0.7	8	614-XX-648-31-007000	605-XX-648-11-480000
50	2.5	0.6	0.7	8	614-XX-650-31-007000	605-XX-650-11-480000
52	2.6	0.6	0.7	7	614-XX-652-31-007000	605-XX-652-11-480000
50	2.5	0.9	1.0	8	614-XX-950-31-007000	605-XX-950-11-480000
52	2.6	0.9	1.0	7	614-XX-952-31-007000	605-XX-952-11-480000
64	3.2	0.9	1.0	6	614-XX-964-31-007000	605-XX-964-11-480000



For RoHS compliance select plating code.

**XX= Plating Code See Below**

SPECIFY PLATING CODE XX=	13	93	43
Sleeve (Pin)	10μ" Au	200μ" Sn/Pb	200μ" Sn
Contact (Clip)	30μ" Au	30μ" Au	30μ" Au